

TANK COMPONENTS			
No.	Description	Material	Qty/Remarks
1	Water tank	FRP	1 Colour GRAY
2	Manhole Cover	FRP	1 S/S Hinges & Locks
3	Internal Ladder	SS	1 Height : 2.5m
4	External Ladder	GI	1 Height : 2.5m
5	Air vent	PVC	1 Light & Insect Proof 4" Bowl Type
6	Inlet	-	1 3" Connection Flange
7	Outlet	-	1 3" Connection Flange
8	Drainage	-	1 2" Connection Flange
9	Overflow	-	1 4" Connection Flange
10	Control	PVC	1 3" Connection Flange
11	Water Level Indicator	CM	1
12	Anti-Vortex Inhibitor	PVC	1 3" Connection Flange
13	Side manway	FRP	1

Pedestal Steel Footing

NOTES:

CAUTIONS

1. Allow a minimum space of 50 cm all around the tank's foundation.
2. Maximum allowable deflection in concrete foundation = +/- 2mm.
3. For sizes of items 6, 7, 8, 9 & 10, please refer to catalogue.
4. FTC will not be held liable if the erection of our water tanks are not made in accordance to the technical requirements of concrete foundation, steel footing and water tank assembly drawings.
5. Overflow shall be minimum twice the volume of inlet.
6. Overflow shall flow freely to the ground.
7. All tanks shall be electrically grounded.

GRP Panel Type Water Tanks

Seismic Load Kh=0.3G

Tank size:	6.56 x 3.28x 8.2 ft High.		
	2x1x2.5 m HIGH		
Volume:	5 m ³	1,320 USG	1,099 ImpG
Bolts / Nuts:	S/S A4 - 316		
Insulation:	Non-Insulated		

Project Name:

2323 S Voss

Contractor:

Cougar USA

Consultant:

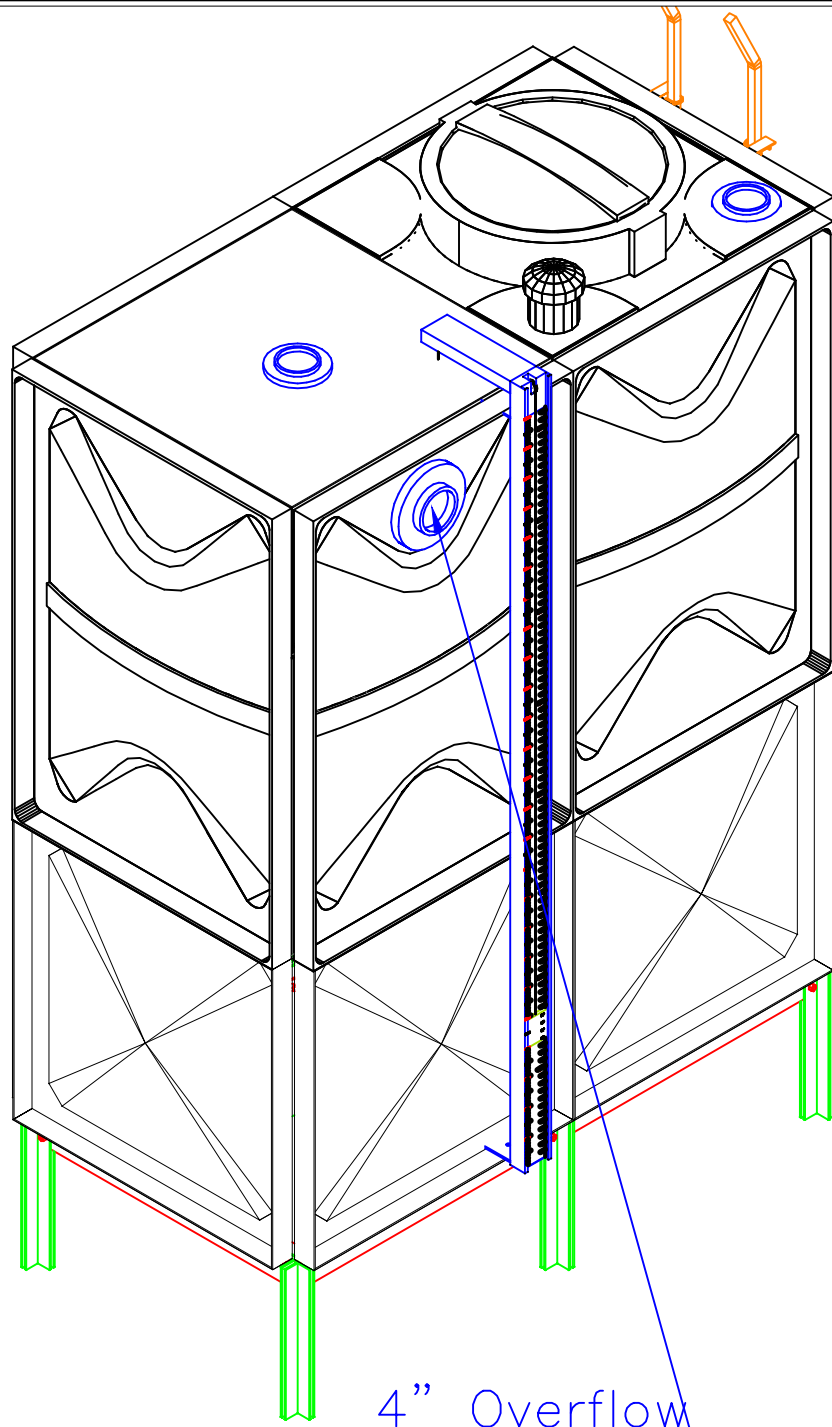
Done By:	JC	Reviewed by:	
		Verified by:	-

Revisions

No.	Issue Date	Description
0	01Nov21	NEW

FTC FIBER TECHNOLOGY CORPORATION

Head Office:
Lorton, Virginia, United States of America
Regional Office:
Jebel Ali Free Zone, Dubai, U.A.E.



4" Overflow

TANK-AXONOMETRIC

TANK COMPONENTS

No.	Description	Material	Qty	Remarks
1	Water tank	FRP	1	Colour GRAY
2	Manhole Cover	FRP	1	S/S Hinges & Locks
3	Internal Ladder	SS	1	Height : 2.5m
4	External Ladder	GI	1	Height : 2.5m
5	Air vent	PVC	1	Light & Insect Proof 2" Cowl Type
6	Inlet	-	1	3" Connection Flange
7	Outlet	-	1	3" Connection Flange
8	Drainage	-	1	2" Connection Flange
9	Overflow	-	1	4" Connection Flange
10	Control	PVC	1	3" Connection Flange
11	Water Level Indicator	CM	1	
12	Anti-Vortex Inhibitor	PVC	1	3" Connection Flange
13	Side manway	FRP	1	-

Pedestal Steel Footing

NOTES:

CAUTIONS

1. Allow a minimum space of 50 cm all around the tank's foundation.
2. Maximum allowable deflection in concrete foundation = +/- 2mm.
3. For sizes of items 6, 7, 8, 9 & 10, please refer to catalogue.
4. FTC will not be held liable if the erection of our water tanks are not made in accordance to the technical requirements of concrete foundation, steel footing and water tank assembly drawings.
5. Overflow shall be minimum twice the volume of inlet.
6. Overflow shall flow freely to the ground.
7. All tanks shall be electrically grounded.

GRP Panel Type Water Tanks

Seismic Load Kh=0.3G

Tank size:	6.56 x 3.28x 8.2 ft High.			
	2x1x2.5 m HIGH			
Volume:	5	1,320	1,099	
	m ³	USG	ImpG	
Bolts / Nuts:	S/S A4 - 316			
Insulation:	Non-Insulated			

Project Name:

2323 S Voss

Contractor:

Cougar USA

Consultant:

-

Done By:	JC	Reviewed by:	
		Verified by:	-

Revisions

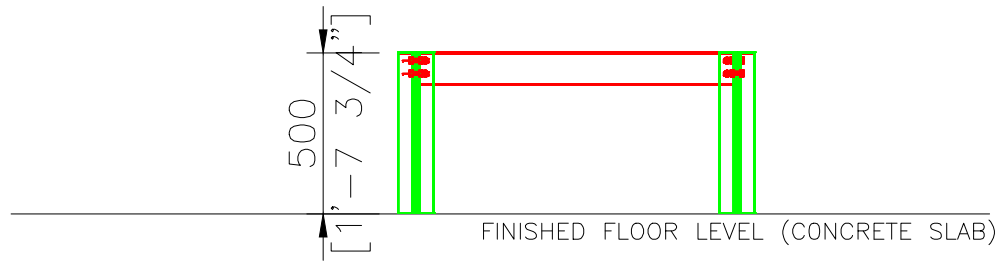
No.	Issue Date	Description
0	01Nov21	NEW

FTC FIBER TECHNOLOGY CORPORATION

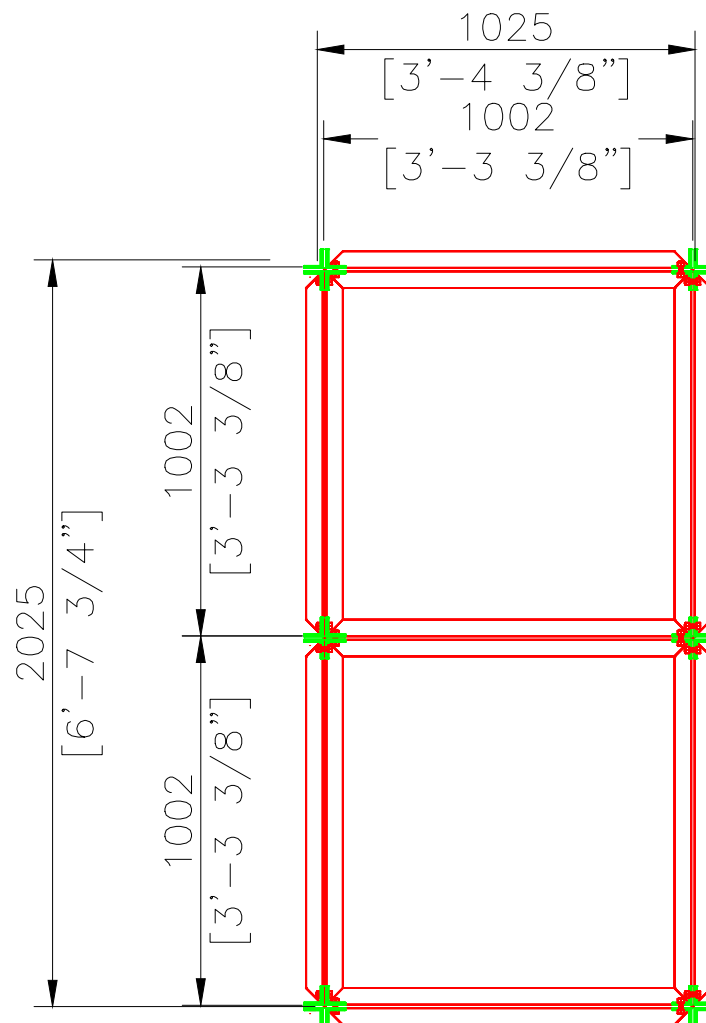
Head Office:
Lorton, Virginia, United States of America
Regional Office:
Jebel Ali Free Zone, Dubai, U.A.E.

Copyright Fiber Technology Corporation

STEEL-ELEVATION



STEEL PLAN



TANK COMPONENTS

No.	Description	Material	Qty	Remarks
1	Water tank	FRP	1	Colour GRAY
2	Manhole Cover	FRP	1	S/S Hinges & Locks
3	Internal Ladder	SS	1	Height : 2.5m
4	External Ladder	GI	1	Height : 2.5m
5	Air vent	PVC	1	Light & Insect Proof 4" Bowl Type
6	Inlet	-	1	3" Connection Flange
7	Outlet	-	1	3" Connection Flange
8	Drainage	-	1	2" Connection Flange
9	Overflow	-	1	4" Connection Flange
10	Control	PVC	1	3" Connection Flange
11	Water Level Indicator	CM	1	
12	Anti-Vortex Inhibitor	PVC	1	3" Connection Flange
13	Side manway	FRP	1	-

Pedestal Steel Footing

NOTES:

CAUTIONS

1. Allow a minimum space of 50 cm all around the tank's foundation.
2. Maximum allowable deflection in concrete foundation = +/- 2mm.
3. For sizes of items 6, 7, 8, 9 & 10, please refer to catalogue.
4. FTC will not be held liable if the erection of our water tanks are not made in accordance to the technical requirements of concrete foundation, steel footing and water tank assembly drawings.
5. Overflow shall be minimum twice the volume of inlet.
6. Overflow shall flow freely to the ground.
7. All tanks shall be electrically grounded.

GRP Panel Type Water Tanks

Seismic Load Kh=0.3G

Tank size:	6.56 x 3.28x 8.2 ft High.		
	2x1x2.5 m HIGH		
Volume:	5 m ³	1,320 USG	1,099 ImpG
Bolts / Nuts:	S/S A4 - 316		
Insulation:	Non-Insulated		

Project Name:

2323 S Voss

Contractor:

Cougar USA

Consultant:

-

Done By:	JC	Reviewed by:	
		Verified by:	-

Revisions

No.	Issue Date	Description
0	01Nov21	NEW

FTC FIBER TECHNOLOGY CORPORATION

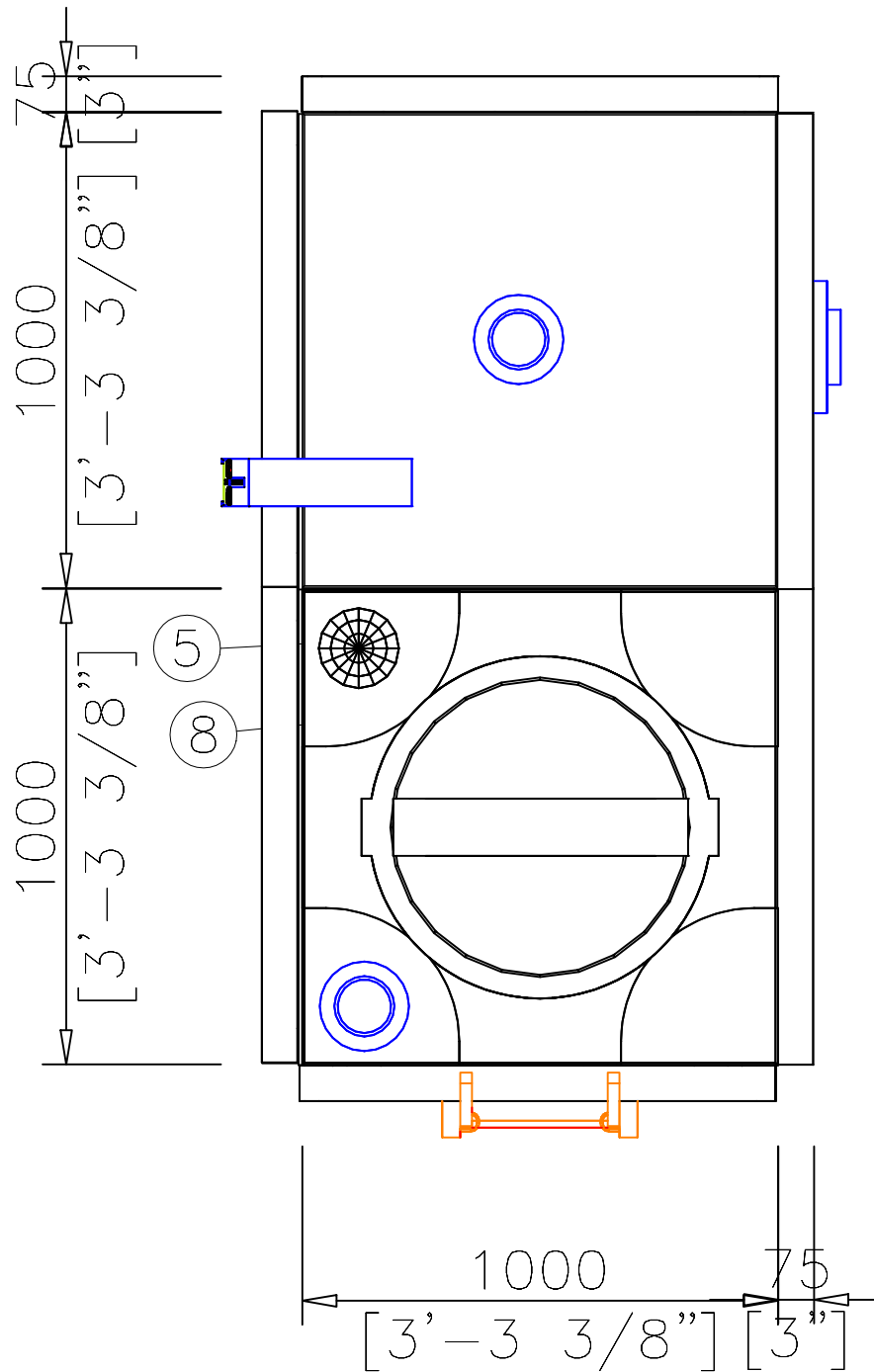
Head Office:

Lorton, Virginia, United States of America

Regional Office:

Jebel Ali Free Zone, Dubai, U.A.E.

Copyright Fiber Technology Corporation



TANK-PLAN

TANK COMPONENTS			
No.	Description	Material	Qty
1	Water tank	FRP	1
2	Manhole Cover	FRP	1
3	Internal Ladder	SS	1
4	External Ladder	GI	1
5	Air vent	PVC	1
6	Inlet	-	1
7	Outlet	-	1
8	Drainage	-	1
9	Overflow	-	1
10	Control	PVC	1
11	Water Level Indicator	CM	1
12	Anti-Vortex Inhibitor	PVC	1
13	Side manway	FRP	1

Pedestal Steel Footing	
NOTES:	
CAUTIONS	
1. Allow a minimum space of 50 cm all around the tank's foundation. 2. Maximum allowable deflection in concrete foundation = +/- 2mm. 3. For sizes of items 6, 7, 8, 9 & 10, please refer to catalogue. 4. FTC will not be held liable if the erection of our water tanks are not made in accordance to the technical requirements of concrete foundation, steel footing and water tank assembly drawings. 5. Overflow shall be minimum twice the volume of inlet. 6. Overflow shall flow freely to the ground. 7. All tanks shall be electrically grounded.	

GRP Panel Type Water Tanks			
Seismic Load Kh=0.3G			
Tank size:	6.56 x 3.28x 8.2 ft High. 2x1x2.5 m HIGH		
Volume:	5 m ³	1,320 USG	1,099 ImpG
Bolts / Nuts:	S/S A4 - 316		
Insulation:	Non-Insulated		

Project Name:	2323 S Voss
Contractor:	Cougar USA
Consultant:	-

Done By:	JC	Reviewed by:	
		Verified by:	-
Revisions			
No.	Issue Date	Description	
0	01Nov21	NEW	

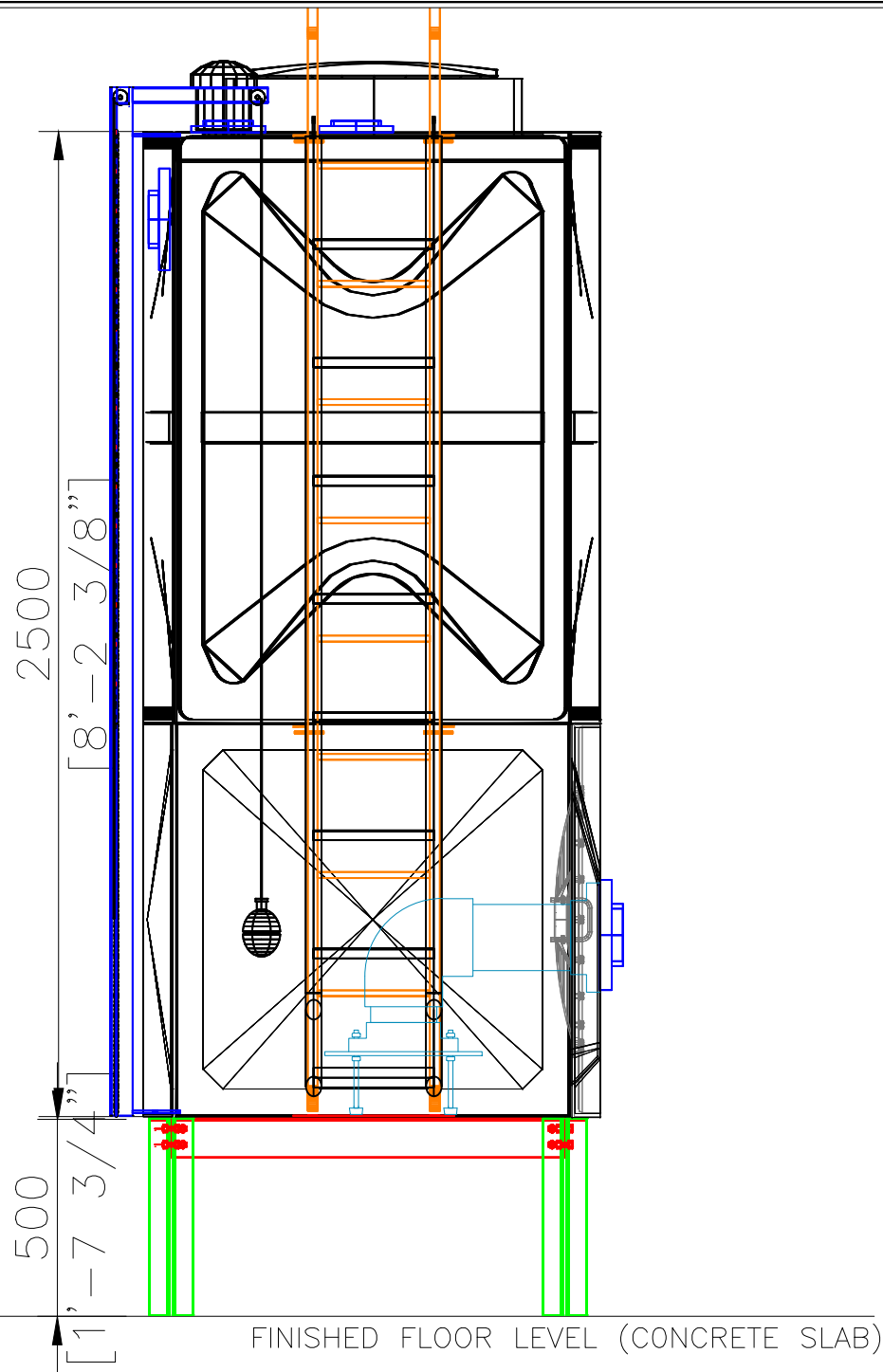
Head Office:

Lorton, Virginia, United States of America

Regional Office:

Jebel Ali Free Zone, Dubai, U.A.E.

FRONT ELEVATION



TANK COMPONENTS

No.	Description	Material	Qty	Remarks
1	Water tank	FRP	1	Colour GRAY
2	Manhole Cover	FRP	1	S/S Hinges & Locks
3	Internal Ladder	SS	1	Height : 2.5m
4	External Ladder	GI	1	Height : 2.5m
5	Air vent	PVC	1	Light & Insect Proof 4" Cowl Type
6	Inlet	-	1	3" Connection Flange
7	Outlet	-	1	3" Connection Flange
8	Drainage	-	1	2" Connection Flange
9	Overflow	-	1	4" Connection Flange
10	Control	PVC	1	3" Connection Flange
11	Water Level Indicator	CM	1	
12	Anti-Vortex Inhibitor	PVC	1	3" Connection Flange
13	Side manway	FRP	1	-

Pedestal Steel Footing

- NOTES:
- CAUTIONS
1. Allow a minimum space of 50 cm all around the tank's foundation.
 2. Maximum allowable deflection in concrete foundation = +/- 2mm.
 3. For sizes of items 6, 7, 8, 9 & 10, please refer to catalogue.
 4. FTC will not be held liable if the erection of our water tanks are not made in accordance to the technical requirements of concrete foundation, steel footing and water tank assembly drawings.
 5. Overflow shall be minimum twice the volume of inlet.
 6. Overflow shall flow freely to the ground.
 7. All tanks shall be electrically grounded.

GRP Panel Type Water Tanks

Seismic Load Kh=0.3G

Tank size:	6.56 x 3.28x 8.2 ft High. 2x1x2.5 m HIGH		
Volume:	5 m ³	1,320 USG	1,099 ImpG
Bolts / Nuts:	S/S A4 - 316		
Insulation:	Non-Insulated		

Project Name:

2323 S Voss

Contractor:

Cougar USA

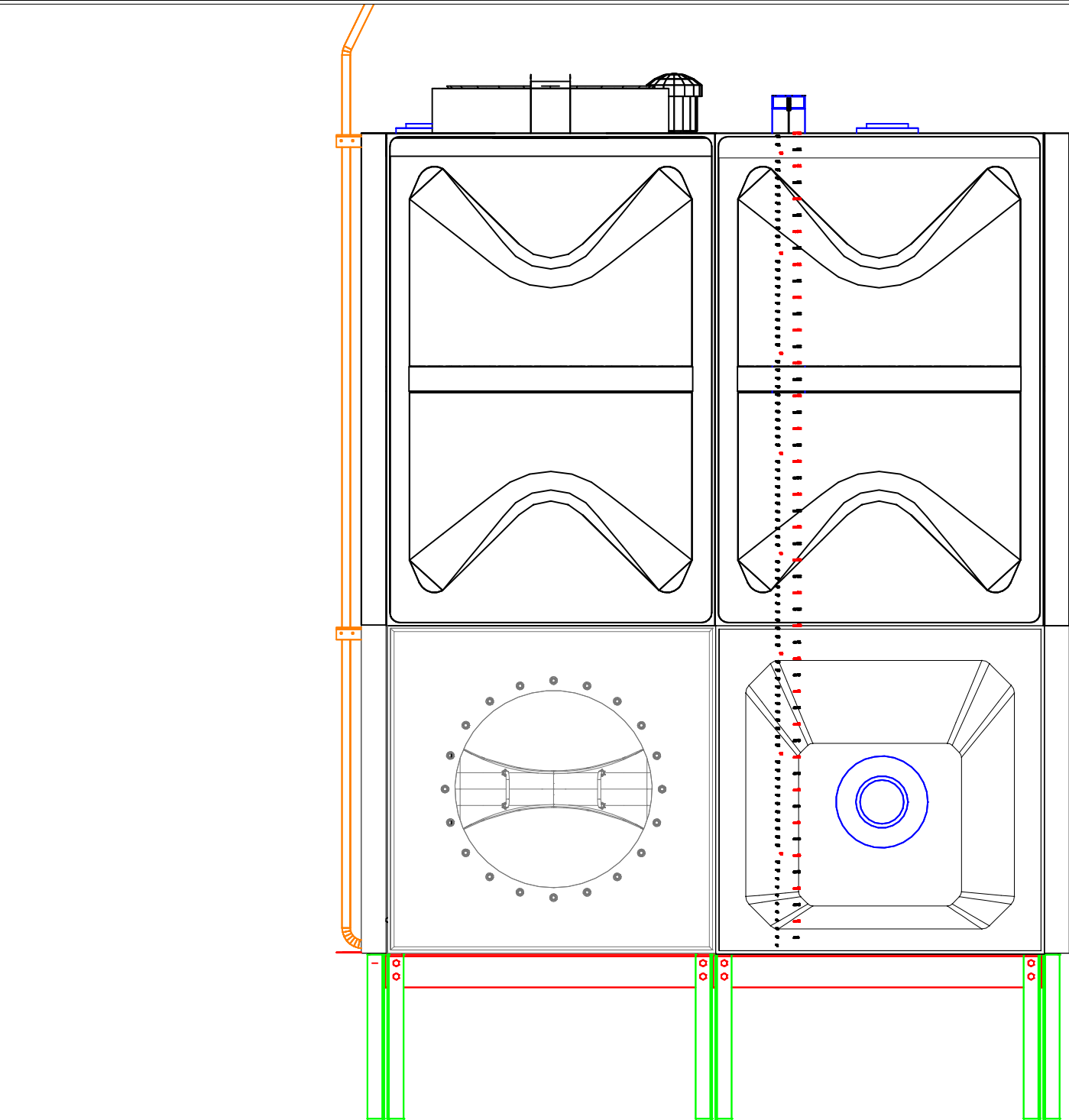
Consultant:

-

Done By:	JC	Reviewed by:	
		Verified by:	-
Revisions			
No.	Issue Date	Description	
0	01Nov21	NEW	

FTC FIBER TECHNOLOGY CORPORATION

Head Office:
Lorton, Virginia, United States of America
Regional Office:
Jebel Ali Free Zone, Dubai, U.A.E.



TANK-RIGHT ELEVATION

TANK COMPONENTS			
No.	Description	Material	Qty/Remarks
1	Water tank	FRP	1 Colour GRAY
2	Manhole Cover	FRP	1 S/S Hinges & Locks
3	Internal Ladder	SS	1 Height : 2.5m
4	External Ladder	GI	1 Height : 2.5m
5	Air vent	PVC	1 Light & Insect Proof 2' Cowl Type
6	Inlet	-	1 3" Connection Flange
7	Outlet	-	1 3" Connection Flange
8	Drainage	-	1 2" Connection Flange
9	Overflow	-	1 4" Connection Flange
10	Control	PVC	1 3" Connection Flange
11	Water Level Indicator	CM	1
12	Anti-Vortex Inhibitor	PVC	1 3" Connection Flange
13	Side manway	FRP	1 -

Pedestal Steel Footing

NOTES:

CAUTIONS

1. Allow a minimum space of 50 cm all around the tank's foundation.
2. Maximum allowable deflection in concrete foundation = +/- 2mm.
3. For sizes of items 6, 7, 8, 9 & 10, please refer to catalogue.
4. FTC will not be held liable if the erection of our water tanks are not made in accordance to the technical requirements of concrete foundation, steel footing and water tank assembly drawings.
5. Overflow shall be minimum twice the volume of inlet.
6. Overflow shall flow freely to the ground.
7. All tanks shall be electrically grounded.

GRP Panel Type Water Tanks

Seismic Load Kh=0.3G

Tank size:	6.56 x 3.28x 8.2 ft High.		
	2x1x2.5 m HIGH		
Volume:	5 m ³	1,320 USG	1,099 ImpG
Bolts / Nuts:	S/S A4 - 316		
Insulation:	Non-Insulated		

Project Name:

2323 S Voss

Contractor:

Cougar USA

Consultant:

-

Done By:	JC	Reviewed by:	
		Verified by:	-

Revisions

No.	Issue Date	Description
0	01Nov21	NEW

FTC FIBER TECHNOLOGY CORPORATION

Head Office:
Lorton, Virginia, United States of America
Regional Office:
Jebel Ali Free Zone, Dubai, U.A.E.