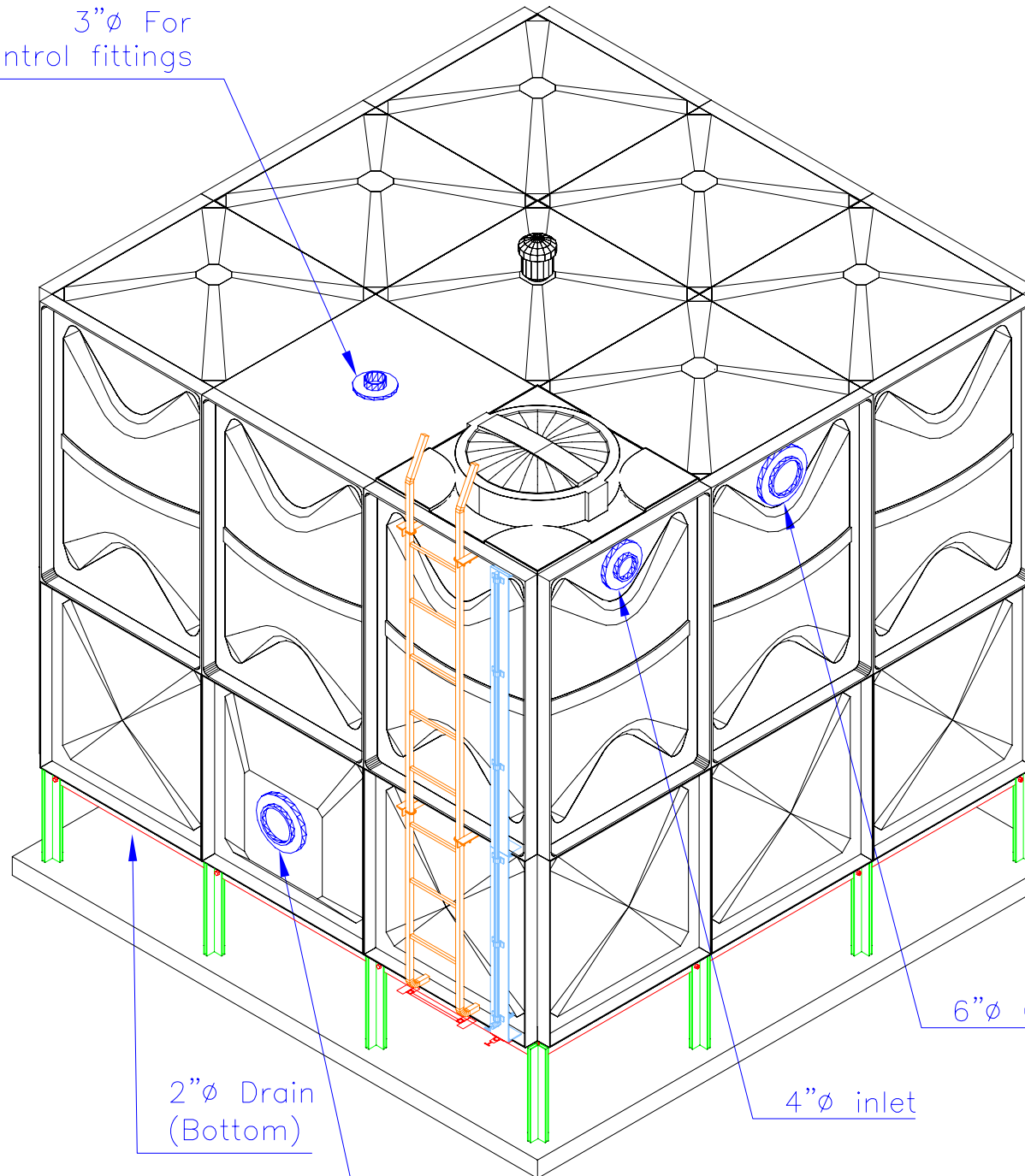


3"ø For
Control fittings



TANK-AXONOMETRIC

TANK COMPONENTS

No.	Description	Material	Qty.	Remarks
1	Water tank	FRP	1	Colour Gray
2	Manhole Cover	FRP	1	S/S Hinges & Locks
3	Internal Ladder	FRP	1	Height : 2.5m
4	External Ladder	G.I	1	Height : 2.5m
5	Air vent	P.V.C	1	UGRT & Insect Proof 4" Cow Type
6	Inlet	S.S	1	ø10
7	Outlet	S.S	1	ø10
8	Drainage	NPT	1	2½"
9	Overflow	S.S	1	ø10
10	Controls Fittings	P.V.C	1	3½"
11	Water Level Gage	GRP/ACRYLIC	1	Height : 2.5m
12	Vortex plate Assembly	G.R.P.	1	For ø10 Outlet
13				

STEEL FRAME

Galvanized Modular Pedestal Steel Footing System

CAUTIONS

NOTES:

1. Allow a minimum space of 50 cm all around the tank's
2. Maximum allowable deviation in concrete slab = ± 2 mm.
3. For sizes of items 6, 7, 8, & 9, please refer to catalogue.
4. Overflow shall be minimum twice the volume of inlet.
5. Overflow shall flow freely to the ground.
6. All pipes, fittings and other accessories shall be self supported.
7. Tank should be electrically grounded.

FRP Panel Type Water Tanks

Seismic Load $K_h=0.3G$

Tank size:	3x3x2.5m HIGH		
Capacity:	22.5 m ³	5,944 USG	4,949 ImpG
Bolts / Nuts:	S/S-A4		
Insulation:	Non- Insulated		

Internal Tie rods

Project Name:

-

Contractor:

COUGAR USA

Consultant:

-

Reference No.: Scale: NTS Page No.

Done By: Muhassin Approved By: JB

Revisions

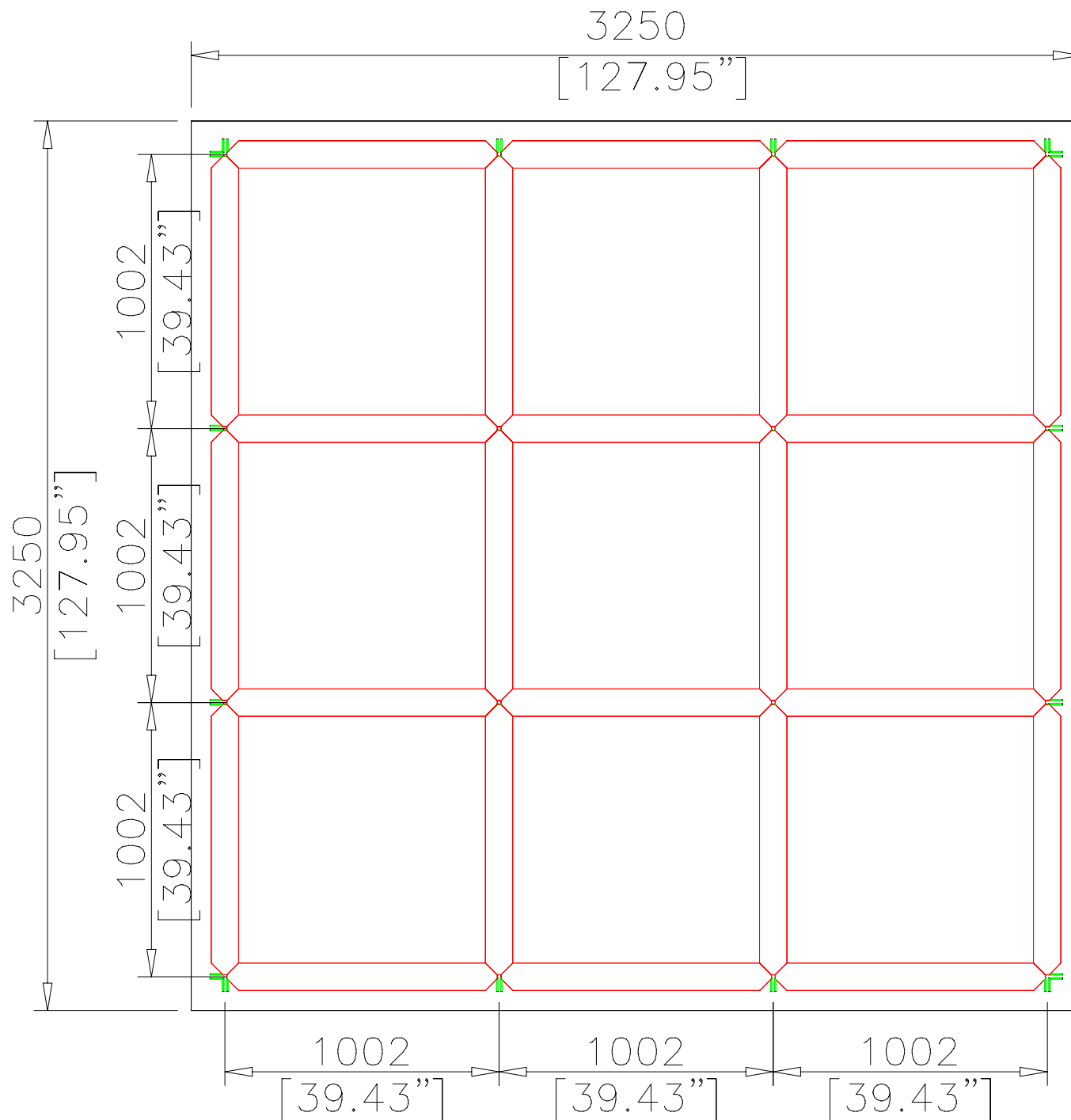
No.	Date	Description
0	24Aug'20	NEW

FTC | FIBER TECHNOLOGY CORPORATION

Head Office:
Lorton, Virginia, United States of America
Regional Office:
Jebel Ali Free Zone, Dubai, U.A.E.

Copyright Fiber Technology Corporation

STEEL-PAN



TANK COMPONENTS			
No.	Description	Material	Qty. Remarks
1	Water tank	FRP	1 Colour Gray
2	Manhole Cover	FRP	1 S/S Hinges & Locks
3	Internal Ladder	FRP	1 Height : 2.5m
4	External Ladder	G.I	1 Height : 2.5m
5	Air vent	P.V.C	1 Light & Insect Proof 4" Cowl Type
6	Inlet	S.S	1 4"
7	Outlet	S.S	1 6"
8	Drainage	NPT	1 2"
9	Overflow	S.S	1 6"
10	Controls Fittings	P.V.C	1 3"
11	Water Level Gage	GRP/ ACRYLIC	1 Height : 2.5m
12	Vortex plate Assembly	G.R.P.	1 For 6" Outlet
13			

STEEL FRAME	
Galvanized Modular Pedestal Steel Footing System	

NOTES:	
CAUTIONS	
1. Allow a minimum space of 50 cm all around the tank/s	
2. Maximum allowable deviation in concrete slab = +/- 2mm.	
3. For sizes of items 6, 7, 8, & 9, please refer to catalogue.	
4. Overflow shall be minimum twice the volume of inlet.	
5. Overflow shall flow freely to the ground.	
6. All pipes, fittings and other accessories shall be self supported.	
7. Tank should be electrically grounded.	

FRP Panel Type Water Tanks	
Seismic Load Kh=0.3G	

Tank size:	3x3x2.5m HIGH		
Capacity:	22.5 m ³	5,944 USG	4,949 ImpG
Bolts / Nuts:	S/S-A4		
Insulation:	Non- Insulated		

Internal Tie rods

Project Name:
-

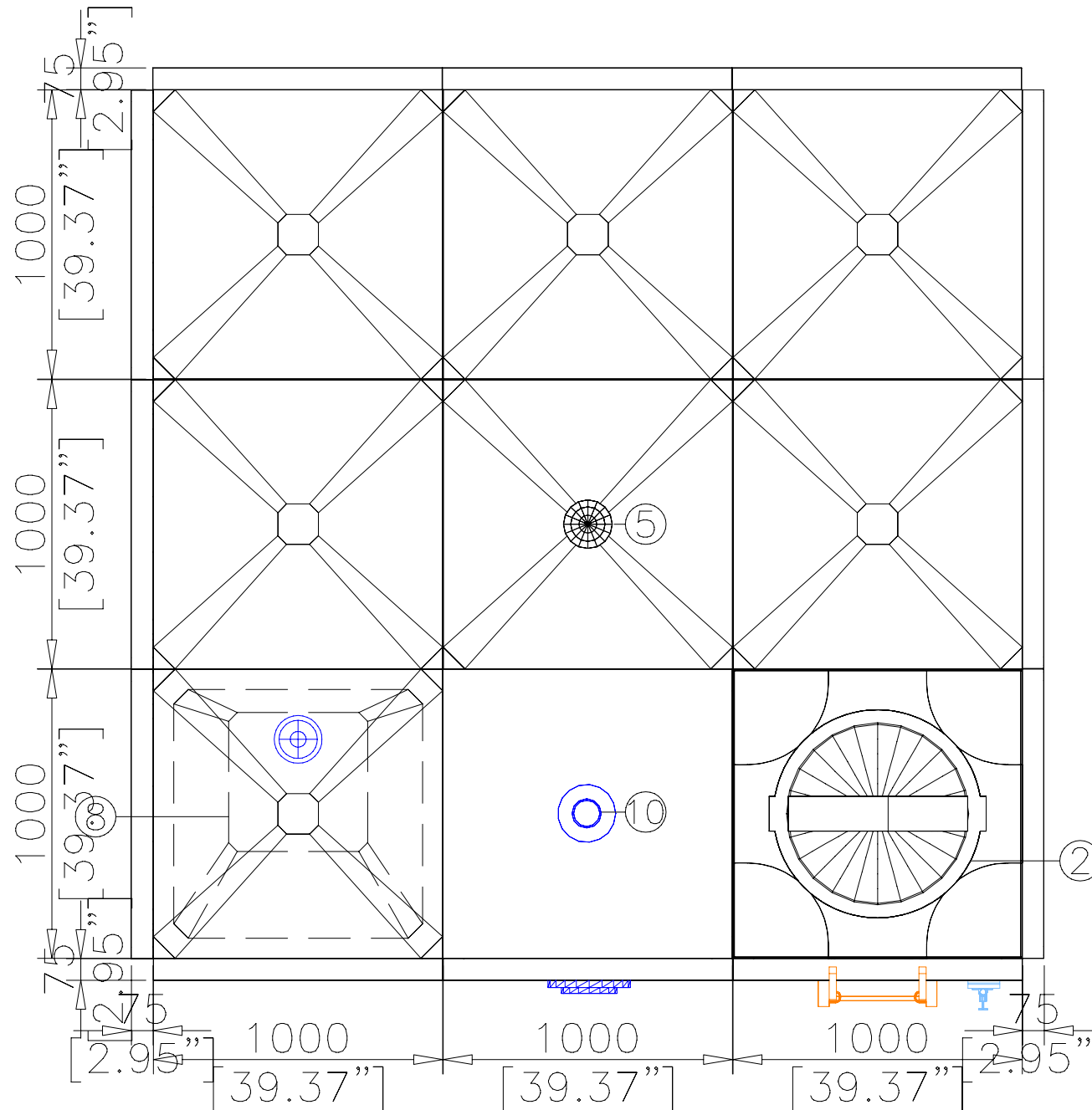
Contractor:
COUGAR USA

Consultant:
-

Reference No.:	Scale: NTS	Page No.
Done By: Muhassin	Approved By: JB	

Revisions		
No.	Date	Description
0	24Aug'20	NEW

FTC FIBER TECHNOLOGY CORPORATION
Head Office: Lorton, Virginia, United States of America
Regional Office: Jebel Ali Free Zone, Dubai, U.A.E.



TANK-PLAN

TANK COMPONENTS			
No.	Description	Material/Qty.	Remarks
1	Water tank	FRP	1 Colour Gray
2	Manhole Cover	FRP	1 S/S Hinges & Locks
3	Internal Ladder	FRP	1 Height : 2.5m
4	External Ladder	G.I	1 Height : 2.5m
5	Air vent	P.V.C	1 LGFT & Insect Proof 4" Cow Type
6	Inlet	S.S	1 4"
7	Outlet	S.S	1 6"
8	Drainage	MPT	1 2"
9	Overflow	S.S	1 6"
10	Controls Fittings	P.V.C	1 3"
11	Water Level Gauge	GRP/ACRYLIC	1 Height : 2.5m
12	Vortex plate Assembly	G.R.P.	1 For 6" Outlet
13			

STEEL FRAME

Galvanized Modular Pedestal Steel Footing System

NOTES:

CAUTIONS

1. Allow a minimum space of 50 cm all around the tank's
2. Maximum allowable deviation in concrete slab = ± 2 mm.
3. For sizes of items 6, 7, 8, & 9, please refer to catalogue.
4. Overflow shall be minimum twice the volume of inlet.
5. Overflow shall flow freely to the ground.
6. All pipes, fittings and other accessories shall be self supported.
7. Tank should be electrically grounded.

FRP Panel Type Water Tanks

Seismic Load $K_h=0.3G$

Tank size:	3x3x2.5m HIGH		
Capacity:	22.5 m ³	5,944 USG	4,949 ImpG
Bolts / Nuts:	S/S-A4		
Insulation:	Non- Insulated		

Internal Tie rods

Project Name:

-

Contractor:

COUGAR USA

Consultant:

-

Reference No.:	Scale: NTS	Page No.
-----------------------	------------	----------

Done By: Muhassin	Approved By: JB
-------------------	-----------------

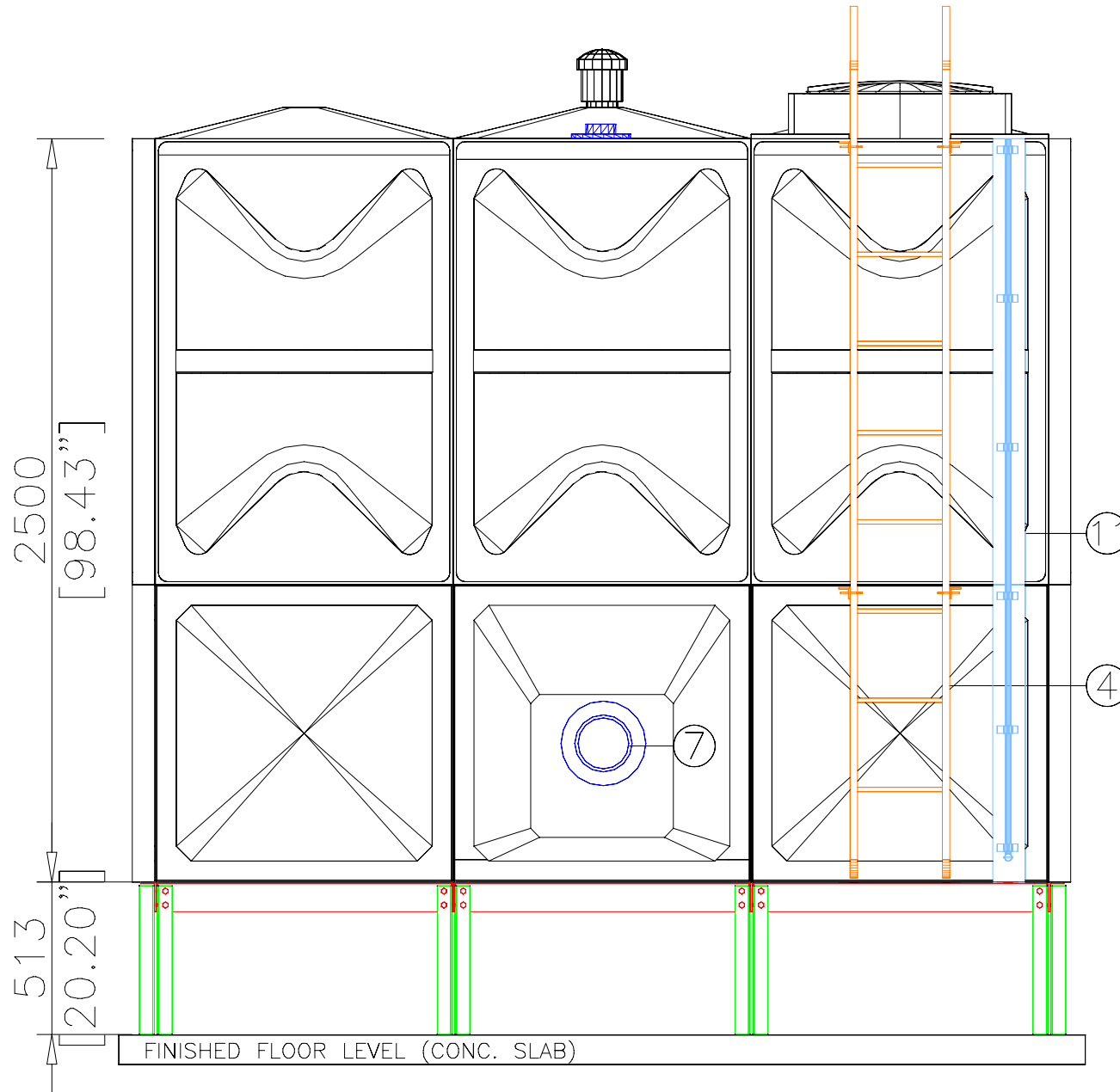
Revisions

No.	Date	Description
0	24Aug20	NEW

FTC | FIBER TECHNOLOGY CORPORATION

Head Office:
Lorton, Virginia, United States of America

Regional Office:
Jebel Ali Free Zone, Dubai, U.A.E.



FRONT ELEVATION

TANK COMPONENTS			
No.	Description	Material	Qty. Remarks
1	Water tank	FRP	1 Colour Gray
2	Manhole Cover	FRP	1 S/S Hinges & Locks
3	Internal Ladder	FRP	1 Height : 2.5m
4	External Ladder	G.I	1 Height : 2.5m
5	Air vent	P.V.C	1 Light & Insect Proof 4" Cowl Type
6	Inlet	S.S	1 4"
7	Outlet	S.S	1 6"
8	Drainage	NPT	1 2"
9	Overflow	S.S	1 6"
10	Controls Fittings	P.V.C	1 3"
11	Water Level Gauge	GRP/ACRYLIC	1 Height : 2.5m
12	Vortex plate Assembly	G.R.P.	1 For 6" Outlet
13			

STEEL FRAME

Galvanized Modular Pedestal Steel Footing System

NOTES:

1. Allow a minimum space of 50 cm all around the tanks
2. Maximum allowable deviation in concrete slab = ± 2 mm.
3. For sizes of items 6, 7, 8, & 9, please refer to catalogue.
4. Overflow shall be minimum twice the volume of inlet.
5. Overflow shall flow freely to the ground.
6. All pipes, fittings and other accessories shall be self supported.
7. Tank should be electrically grounded.

FRP Panel Type Water Tanks

Seismic Load $K_1=0.3G$

Tank size:	3x3x2.5m HIGH		
Capacity:	22.5 m ³	5,944 USG	4,949 ImpG
Bolts / Nuts:	S/S-A4		
Insulation:	Non- Insulated		

Internal Tie rods

Project Name:

-

Contractor:

COUGAR USA

Consultant:

-

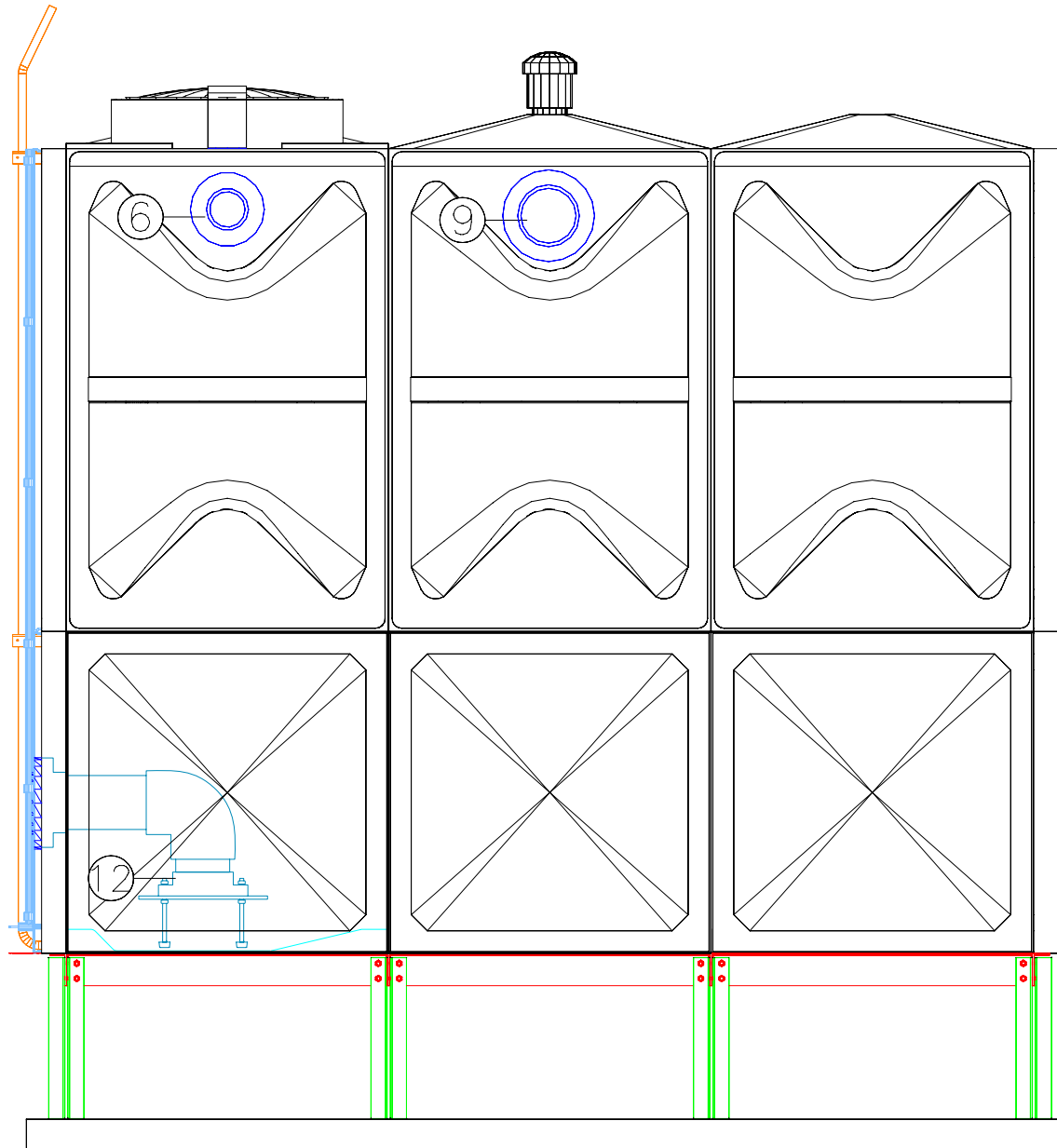
Reference No.:	Scale: NTS	Page No.
Done By: Muhassin	Approved By: JB	

Revisions

No.	Date	Description
0	24Aug20	NEW

FTC | FIBER TECHNOLOGY CORPORATION

Head Office:
Lorton, Virginia, United States of America
Regional Office:
Jebel Ali Free Zone, Dubai, U.A.E.



TANK-RIGHT ELEVATION

TANK COMPONENTS			
No.	Description	Material/Qty.	Remarks
1	Water tank	FRP	1 Colour Gray
2	Manhole Cover	FRP	1 S/S Hinges & Locks
3	Internal Ladder	FRP	1 Height : 2.5m
4	External Ladder	G.I	1 Height : 2.5m
5	Air vent	P.V.C	1 Light & Insect Proof 4" Cow Type
6	Inlet	S.S	1 4"
7	Outlet	S.S	1 6"
8	Drainage	NPT	1 2"
9	Overflow	S.S	1 6"
10	Controls Fittings	P.V.C	1 3"
11	Water Level Gauge	GRP/ACRYLIC	1 Height : 2.5m
12	Vortex plate Assembly	G.R.P.	1 For 6" Outlet
13			

STEEL FRAME

Galvanized Modular Pedestal Steel Footing System

- CAUTIONS**
- NOTES:
1. Allow a minimum space of 50 cm all around the tank's
 2. Maximum allowable deviation in concrete slab = ± 2 mm.
 3. For sizes of items 6, 7, 8, & 9, please refer to catalogue.
 4. Overflow shall be minimum twice the volume of inlet.
 5. Overflow shall flow freely to the ground.
 6. All pipes, fittings and other accessories shall be self supported.
 7. Tank should be electrically grounded.

FRP Panel Type Water Tanks

Seismic Load $K_1=0.3G$

Tank size:	3x3x2.5m HIGH		
Capacity:	22.5 m ³	5,944 USG	4,949 ImpG
Bolts / Nuts:	S/S-A4		
Insulation:	Non- Insulated		

Internal Tie rods

Project Name:

-

Contractor:

COUGAR USA

Consultant:

-

Reference No.:

Scale: NTS

Page No.

Done By: Muhassin

Approved By: JB

Revisions

No.	Date	Description
0	24Aug20	NEW

FTC | FIBER TECHNOLOGY CORPORATION

Head Office:
Lorton, Virginia, United States of America

Regional Office:
Jebel Ali Free Zone, Dubai, U.A.E.