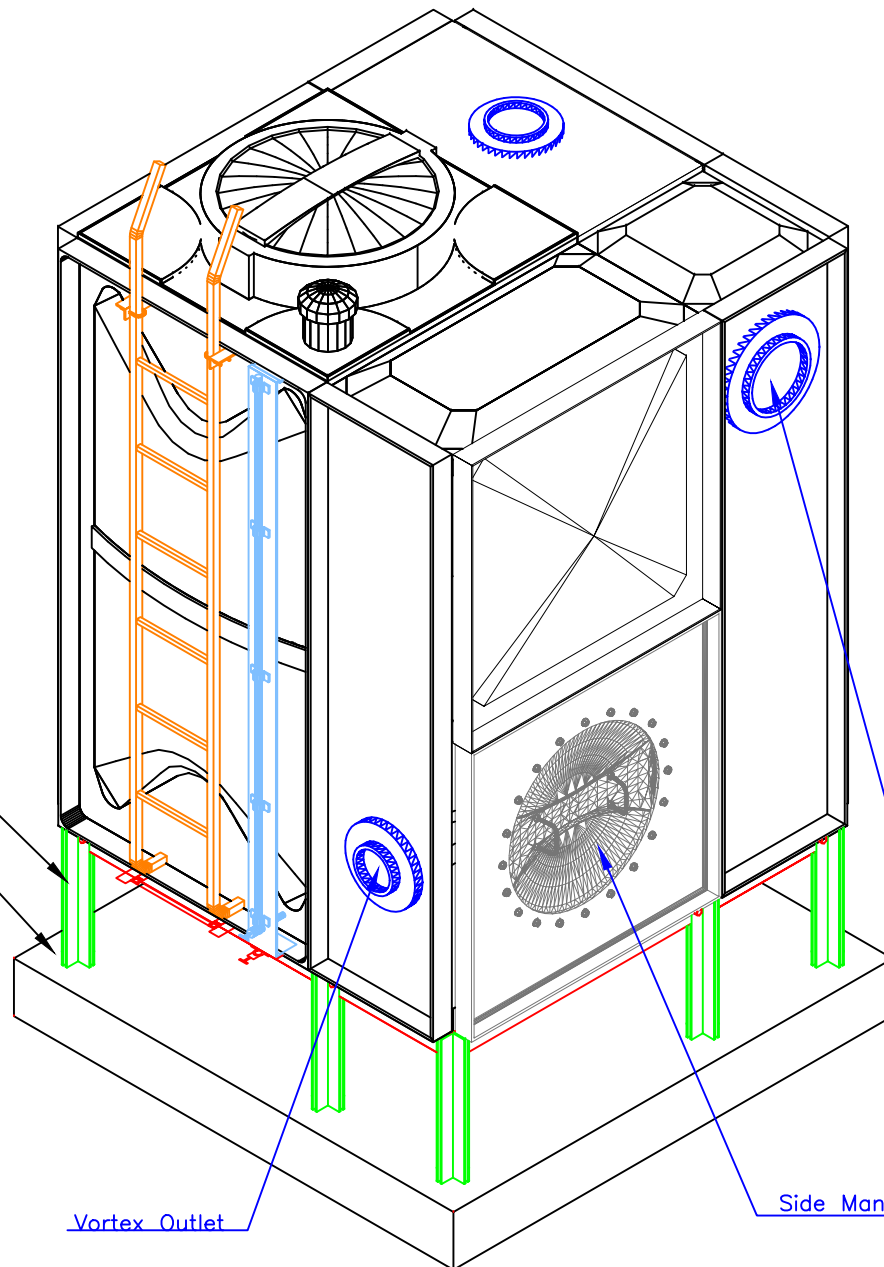


Modular Steel Footing

Concrete Slab



TANK-AXONOMETRIC

#### TANK COMPONENTS

No.	Description	Material	Qty	Remarks
1	Water tank	FRP	1	Colour GRAY
2	Manhole Cover	FRP	1	S/S Hinges & Locks
3	Internal Ladder	FRP/SS	1	Height : 2m
4	External Ladder	G.I.	1	Height : 2m
5	Air vent	PVC	1	Light & Insect Proof 4" Cow Type
6	Inlet	Class 150	1	6" Connection Flange
7	Outlet	Class 150	1	6" Connection Flange
8	Drainage	Class 150	1	2" Connection Flange
9	Overflow	PVC	1	6" Connection Flange
10	Water Level Indicator	GRP/ACRYLIC	1	Height : 2m
11	Vortex Assembly	FRP	1	6" Assembly
12	Side Man Way	FRP	1	

#### NOTES:

#### CAUTIONS

1. Allow a minimum space of 50 cm all around the tank's foundation.
2. Maximum allowable deflection in concrete foundation = +/- 2mm.
3. For sizes of items 6, 7, 8, 9 & 10, please refer to catalogue.
4. FTC will not be held liable if the erection of our water tanks are not made in accordance to the technical requirements of concrete foundation, steel footing and water tank assembly drawings.
5. Overflow shall be minimum twice the volume of inlet.
6. Overflow shall flow freely to the ground.
7. All tanks shall be electrically grounded.

#### GRP Panel Type Water Tanks

Seismic Load Kh=0.3G

Tank size:	4.92x 4.92x 6.56 ft High.		
	1.5x1.5x2 m HIGH		
Volume:	4.5	m <sup>3</sup>	1188.989 ImpG
Bolts / Nuts:	S/S A4 - 316		
Insulation:	Non-Insulated		

#### Project Name:

Marriott  
San Antonio

#### Contractor:

Cougar USA

#### Consultant:

-

Done By:	JC	Reviewed by:	
Verified by:			-

#### Revisions

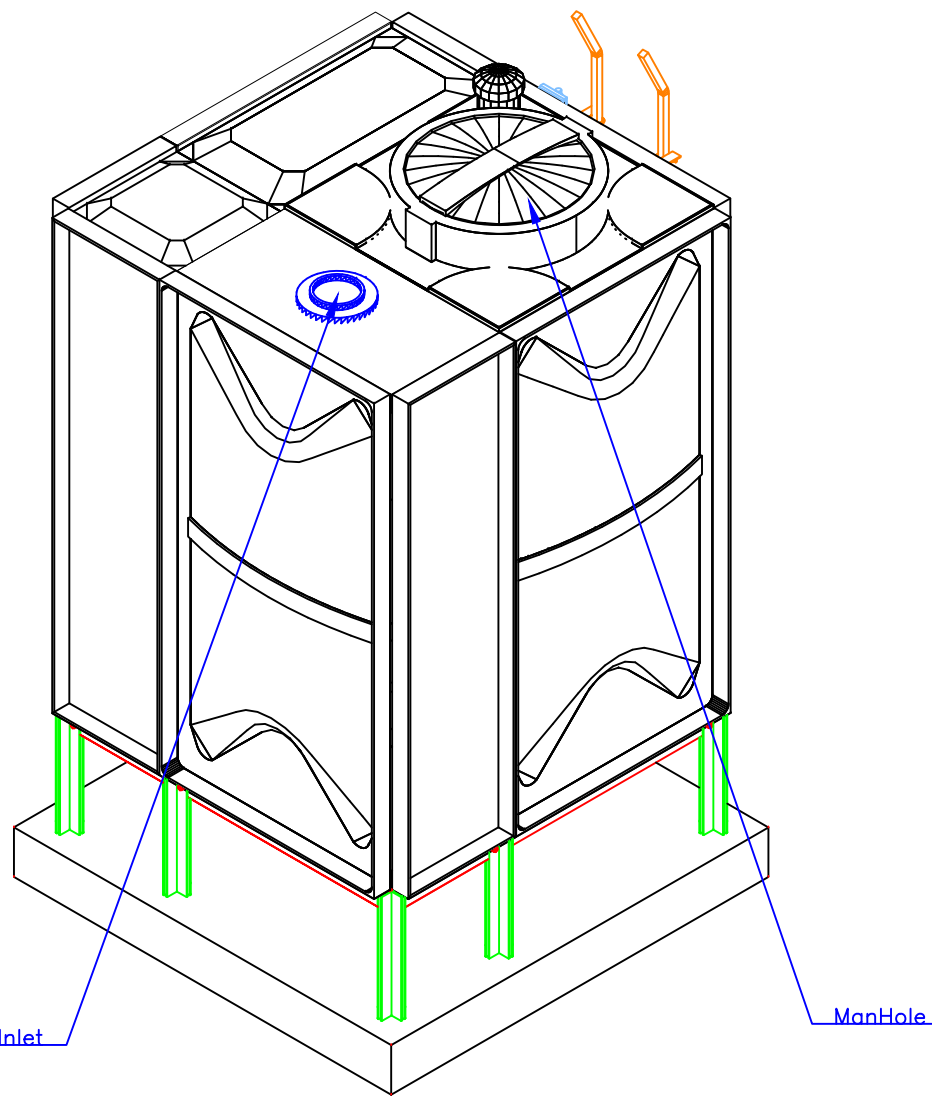
No.	Issue Date	Description
0	17Jan20	NEW

**FTC** FIBER TECHNOLOGY CORPORATION

Head Office:  
Lorton, Virginia, United States of America

Regional Office:  
Jebel Ali Free Zone, Dubai, U.A.E.

Copyright Fiber Technology Corporation



TANK-AXONOMETRIC

TANK COMPONENTS				
No.	Description	Material	Qty	Remarks
1	Water tank	FRP	1	Colour GRAY
2	Manhole Cover	FRP	1	S/S Hinges & Locks
3	Internal Ladder	FRP/SS	1	Height : 2m
4	External Ladder	G.I.	1	Height : 2m
5	Air vent	PVC	1	Light & Insect Proof 4" Cow Type
6	Inlet	Class 150	1	6" Connection Flange
7	Outlet	Class 150	1	6" Connection Flange
8	Drainage	Class 150	1	2" Connection Flange
9	Overflow	PVC	1	6" Connection Flange
10	Water Level Indicator	GRP/ACRYLIC	1	Height : 2m
11	Vortex Assembly	FRP	1	6" Assembly
12	Side Man Way	FRP	1	

- NOTES:
- CAUTIONS
1.

Allow a minimum space of 50 cm all around the tank's foundation.
2.

Maximum allowable deflection in concrete foundation = +/- 2mm.
3.

For sizes of items 6, 7, 8, 9 & 10, please refer to catalogue.
4.

FTC will not be held liable if the erection of our water tanks are not made in accordance to the technical requirements of concrete foundation, steel footing and water tank assembly drawings.
5.

Overflow shall be minimum twice the volume of inlet.
6.

Overflow shall flow freely to the ground.
7.

All tanks shall be electrically grounded.

GRP Panel Type Water Tanks			
Seismic Load Kh=0.3G			
Tank size:	4.92x 4.92x 6.56 ft High.		
	1.5x1.5x2 m HIGH		
Volume:	4.5	m <sup>3</sup>	1188. USG 989 ImpG
Bolts / Nuts:	S/S A4 - 316		
Insulation:	Non-Insulated		

Project Name:

Marriott  
San Antonio

Contractor:

Cougar USA

Consultant:

-

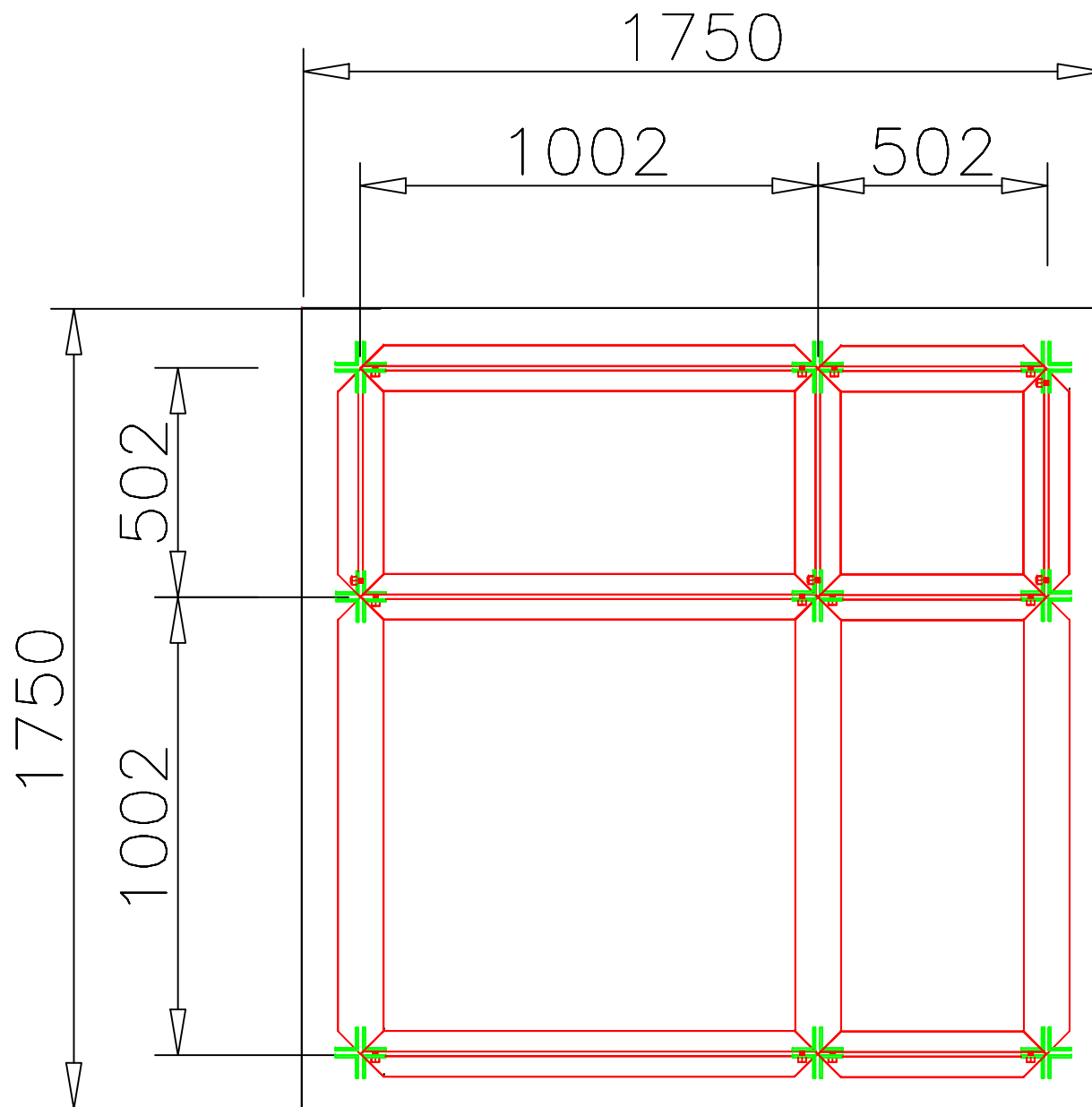
Done By:	JC	Reviewed by:	
		Verified by:	-
Revisions			
No.	Issue Date	Description	
0	17Jan20	NEW	

FTC

FIBER TECHNOLOGY CORPORATION

Head Office:  
Lorton, Virginia, United States of America

Regional Office:  
Jebel Ali Free Zone, Dubai, U.A.E.



STEEL FOOTING-PLAN

TANK COMPONENTS				
No.	Description	Material	Qty	Remarks
1	Water tank	FRP	1	Colour GRAY
2	Manhole Cover	FRP	1	S/S Hinges & Locks
3	Internal Ladder	FRP/SS	1	Height : 2m
4	External Ladder	G.I.	1	Height : 2m
5	Air vent	PVC	1	Light & Insect Proof 4" Cow Type
6	Inlet	Class 150	1	6" Connection Flange
7	Outlet	Class 150	1	6" Connection Flange
8	Drainage	Class 150	1	2" Connection Flange
9	Overflow	PVC	1	6" Connection Flange
10	Water Level Indicator	GRP/ACRYLIC	1	Height : 2m
11	Vortex Assembly	FRP	1	6" Assembly
12	Side Man Way	FRP	1	

- NOTES:**
- Allow a minimum space of 50 cm all around the tank's foundation.
  - Maximum allowable deflection in concrete foundation = +/- 2mm.
  - For sizes of items 6, 7, 8, 9 & 10, please refer to catalogue.
  - FTC will not be held liable if the erection of our water tanks are not made in accordance to the technical requirements of concrete foundation, steel footing and water tank assembly drawings.
  - Overflow shall be minimum twice the volume of inlet.
  - Overflow shall flow freely to the ground.
  - All tanks shall be electrically grounded.

GRP Panel Type Water Tanks				
Seismic Load Kh=0.3G				
<b>Tank size:</b>	4.92x 4.92x 6.56 ft High. 1.5x1.5x2 m HIGH			
<b>Volume:</b>	4.5	m <sup>3</sup>	1188	USG 989 ImpG
<b>Bolts / Nuts:</b>	S/S A4 - 316			
<b>Insulation:</b>	Non-Insulated			

**Project Name:**

**Marriott  
San Antonio**

**Contractor:**

**Cougar USA**

**Consultant:**

-

Done By: JC Reviewed by:

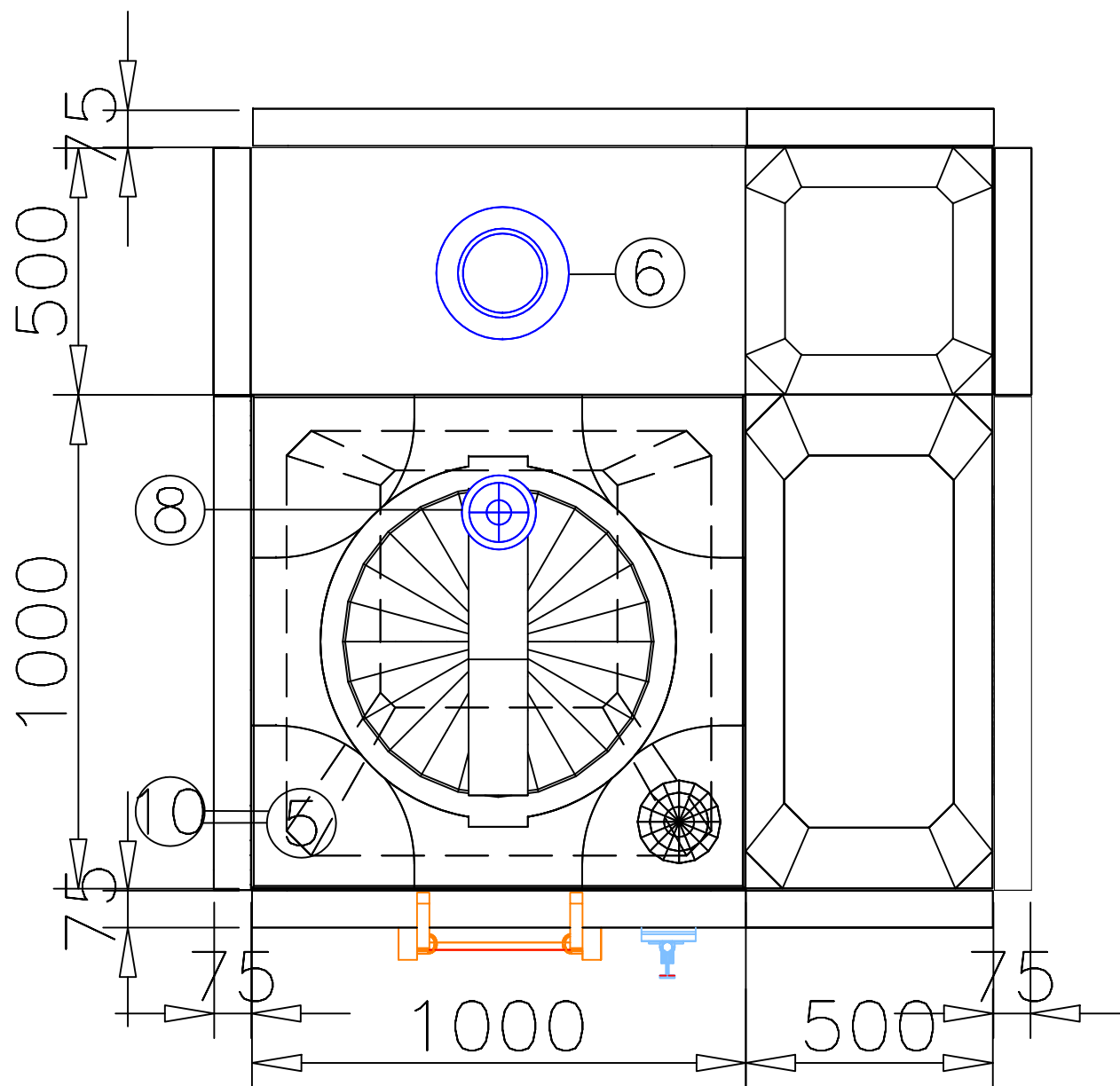
Verified by: -

Revisions		
No.	Issue Date	Description
0	17Jan'20	NEW

**FTC** FIBER TECHNOLOGY CORPORATION

Head Office:  
Lorton, Virginia, United States of America

Regional Office:  
Jebel Ali Free Zone, Dubai, U.A.E.



TANK-PLAN

#### TANK COMPONENTS

No.	Description	Material	Qty	Remarks
1	Water tank	FRP	1	Colour GRAY
2	Manhole Cover	FRP	1	S/S Hinges & Locks
3	Internal Ladder	FRP/SS	1	Height : 2m
4	External Ladder	G.I.	1	Height : 2m
5	Air vent	PVC	1	Light & Insect Proof 4" Cow Type
6	Inlet	Class 150	1	6" Connection Flange
7	Outlet	Class 150	1	6" Connection Flange
8	Drainage	Class 150	1	2" Connection Flange
9	Overflow	PVC	1	6" Connection Flange
10	Water Level Indicator	GRP/ACRYLIC	1	Height : 2m
11	Vortex Assembly	FRP	1	6" Assembly
12	Side Man Way	FRP	1	

#### NOTES:

1. Allow a minimum space of 50 cm all around the tank's foundation.
2. Maximum allowable deflection in concrete foundation = +/- 2mm.
3. For sizes of items 6, 7, 8, 9 & 10, please refer to catalogue.
4. FTC will not be held liable if the erection of our water tanks are not made in accordance to the technical requirements of concrete foundation, steel footing and water tank assembly drawings.
5. Overflow shall be minimum twice the volume of inlet.
6. Overflow shall flow freely to the ground.
7. All tanks shall be electrically grounded.

#### CAUTIONS

#### GRP Panel Type Water Tanks

Seismic Load  $K_h = 0.3G$

**Tank size:** 4.92x 4.92x 6.56 ft High.  
1.5x1.5x2 m HIGH

**Volume:** 4.5 m<sup>3</sup> 1188 USG 989 ImpG

**Bolts / Nuts:** S/S A4 - 316

**Insulation:** Non-Insulated

**Project Name:**

**Marriott  
San Antonio**

**Contractor:**

**Cougar USA**

**Consultant:**

-

Done By: JC Reviewed by:  
Verified by: -

#### Revisions

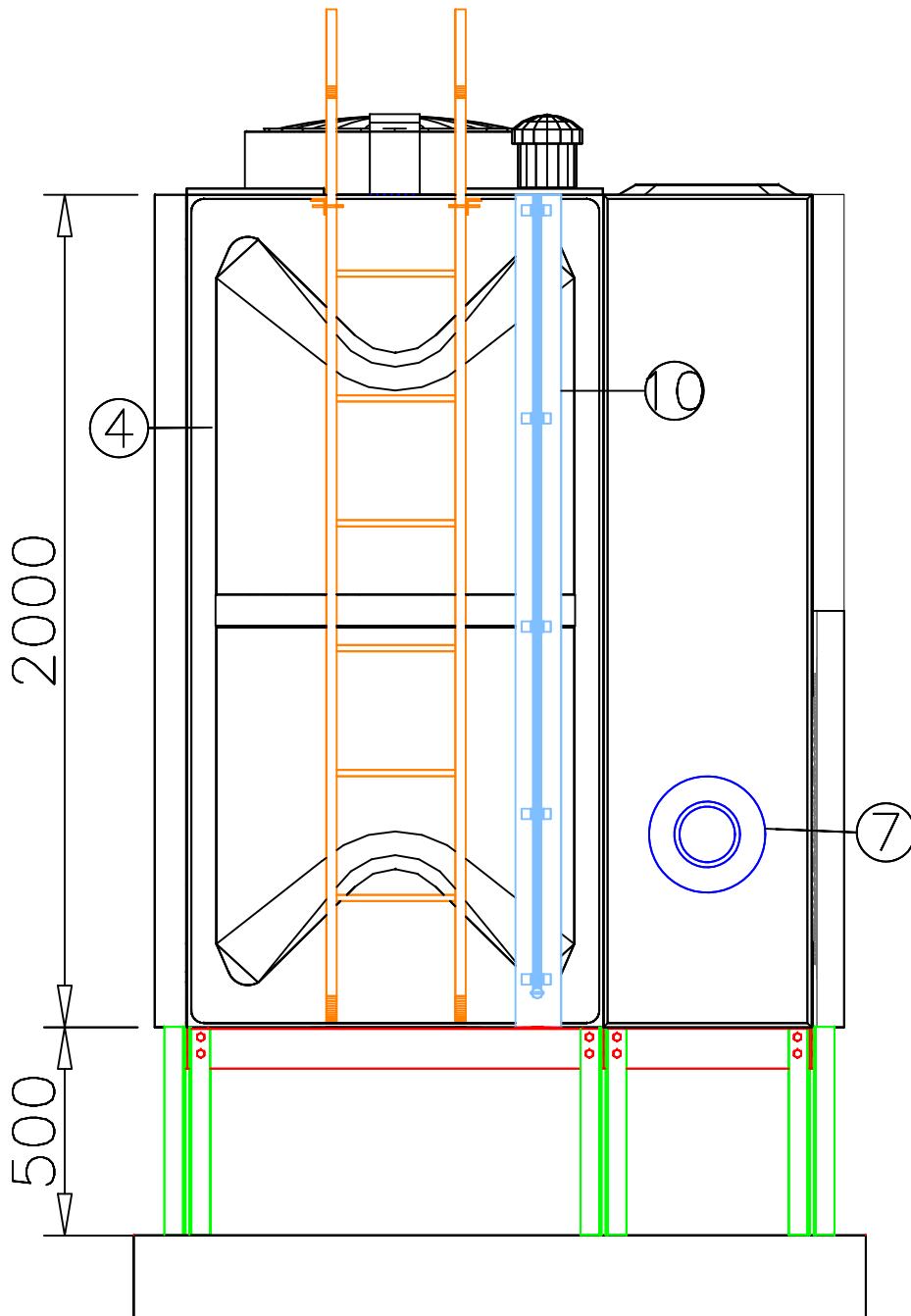
No.	Issue Date	Description
0	17Jan20	NEW

**FTC** FIBER TECHNOLOGY CORPORATION

Head Office:  
Lorton, Virginia, United States of America

Regional Office:  
Jebel Ali Free Zone, Dubai, U.A.E.

Copyright Fiber Technology Corporation



FRONT ELEVATION

# TANK COMPONENTS

No.	Description	Material	Qty	Remarks
1	Water tank	FRP	1	Colour GRAY
2	Manhole Cover	FRP	1	S/S Hinges & Locks
3	Internal Ladder	FRP/SS	1	Height : 2m
4	External Ladder	G.I.	1	Height : 2m
5	Air vent	PVC	1	Light & Insect Proof 4" Cow Type
6	Inlet	Class 150	1	6" Connection Flange
7	Outlet	Class 150	1	6" Connection Flange
8	Drainage	Class 150	1	2" Connection Flange
9	Overflow	PVC	1	6" Connection Flange
10	Water Level Indicator	GRP/ACRYLIC	1	Height : 2m
11	Vortex Assembly	FRP	1	6" Assembly
12	Side Man Way	FRP	1	

## NOTES:

- Allow a minimum space of 50 cm all around the tank's foundation.
- Maximum allowable deflection in concrete foundation = +/- 2mm.
- For sizes of items 6, 7, 8, 9 & 10, please refer to catalogue.
- FTC will not be held liable if the erection of our water tanks are not made in accordance to the technical requirements of concrete foundation, steel footing and water tank assembly drawings.
- Overflow shall be minimum twice the volume of inlet.
- Overflow shall flow freely to the ground.
- All tanks shall be electrically grounded.

## CAUTIONS

### GRP Panel Type Water Tanks

Seismic Load Kh=0.3G

<b>Tank size:</b>	4.92x 4.92x 6.56 ft High. 1.5x1.5x2 m HIGH		
<b>Volume:</b>	4.5 m <sup>3</sup>	1188. USG	989 ImpG
<b>Bolts / Nuts:</b>	S/S A4 - 316		
<b>Insulation:</b>	Non-Insulated		

### Project Name:

Marriott  
San Antonio

### Contractor:

Cougar USA

### Consultant:

-

Done By:	JC	Reviewed by:	
Verified by:			-

### Revisions

No.	Issue Date	Description
0	17Jan20	NEW

**FTC** FIBER TECHNOLOGY CORPORATION

Head Office:  
Lorton, Virginia, United States of America

Regional Office:  
Jebel Ali Free Zone, Dubai, U.A.E.

